

MARIO ROOM MATE

C/Campomanes 4, 28013
T. (+34) 91 548 85 48
F. (+34) 91 559 12 88

NEAR PLACES OF INTEREST

Teatro real: ½ min. (25 mts.)
Royal Palace: 2 min. (100mts.)
Sabatini Gardens: 4 min. (200 mts.)
Gran Vía: 3 min. (200 mts.)
Plaza Mayor: 2 min. (150 mts.)
Puerta del Sol: 4 min. (200 mts.)
La Latina District: 10 min. (400 mts.)
Prado Museum: 15 min. (1.5 Km.)
Thyssen Museum: 15 min. (1.5 km)
Reina Sofía Museum: 20 min. (1.5 Km.)
Plaza de España: 5 min. (300 mts)
Atocha Station: 20 min. (2.5 Km.)
Airport: 30 min. By car (13 Km.)



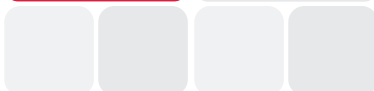
If you are coming from the **Madrid Barajas airport**, you can choose to take a taxi directly or take the metro. Get on **line 8** (pink line, towards Mar de Cristal), get off at the **Nuevos Ministerios** stop, where you can switch to **line 10** (dark blue line, towards puerta del sur) up to the **Alonso Martinez** stop. Next, switch to **line 5** (green line, towards casa de campo) and get off at the **Opera** stop.



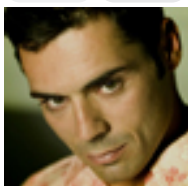
You can arrive at the **Atocha train station**, from which we recommend you take the metro. **Line 1** (light blue line, towards Plaza Castilla) and get off at the **Sol** stop, where you'll switch to **line 2** (red line, towards Ventas), only one stop to **Opera**.



Not recommended



If you are coming by metro, you will need to get on **line 2** (red line) and **line 5** (green line) and get off at **Opera**.



WHAT YOU
CAN'T MISS

Visit the **Sabatini** gardens next to the royal palace and the **Almudena** cathedral.

Brunch every Sunday in the **La Latina** neighborhood.

See **musical** on Madrids' Gran Via.

Opera season at the Teatro Real.

Madrid walkabouts.

Street-shows in the **Plaza Mayor**.

Sample the famous **churros** of San Gines.

Visit the **Rastro** market on Sundays.

Get lost in the los **Asturias** neighborhood.

Out for drinks in the **Malasaña** neighborhood.

